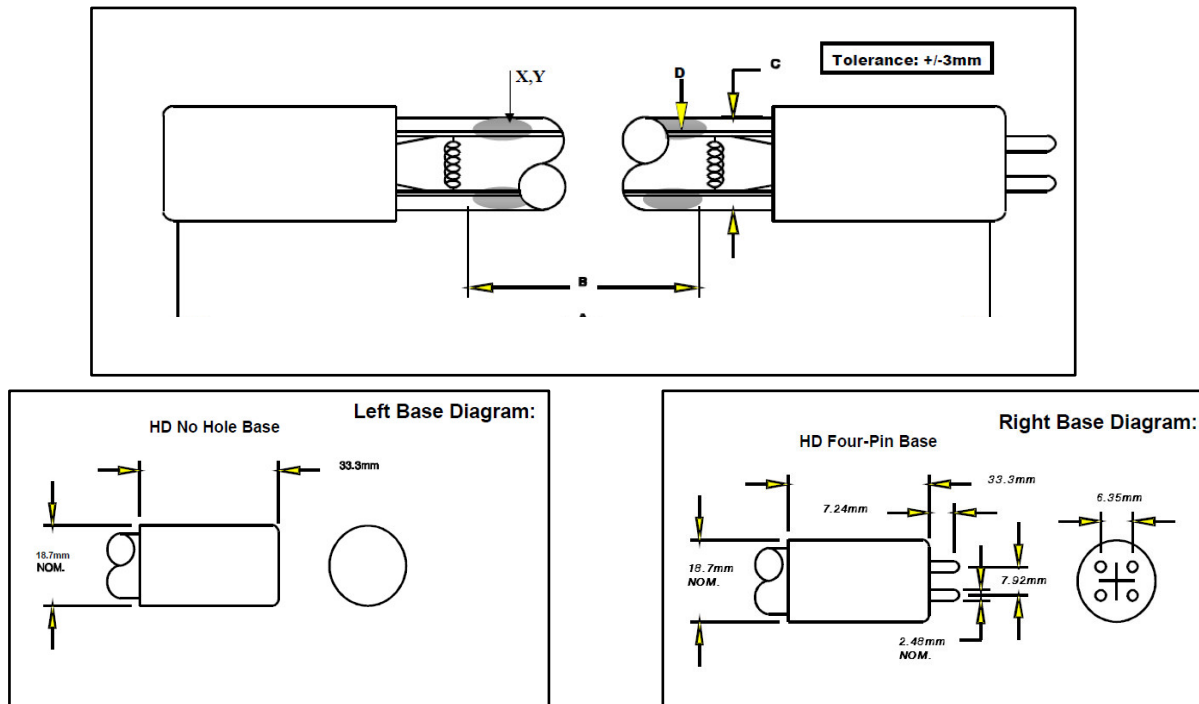


## GPHA1554T5/VH/4 190W AUVL

### 190W UVC Lamp

#### 1. Lamp Diagram



#### 2. Lamp Characteristics

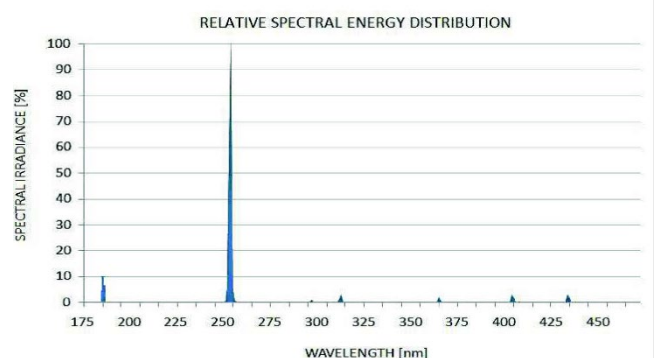
(A) Base Face:	1554 mm
(B) ARC:	1483 mm
(C) Bulb Diameter:	15 mm
(X) Amalgam	
Glass Type:	VH (Ozone)
Base Type:	Four Pin
Coating:	A11-QC-001

Operating current*	1,200 mA
Lamp voltage*	164 V
Lamp wattage*	190 W

#### 3. UV Output

UV Output measured at 254nm	68 W
Irradiance at 1m distance	500 $\mu\text{W}/\text{cm}^2$
Rated Life (hrs)**	12,000 hours
% Output @EOL	80.00 %

Ballast Used for Measurements 03-EB-221



\* UV Output is based on lamps measured after 100 hours of operation under lab conditions. These values are subject to wide variations under application/field conditions.

\*\* Rated Life is for reference purposes only and is based on a group of lamps operating under lab conditions. Actual life depends on the operating conditions of the lamp.